

STECK

Esta é a sua marca.

1º Dígito - Nº de Pólos:

3 = 2P+T
4 = 3P+T
5 = 3P+T+N

3º Dígito - Tipo:

0 = Tomada de Sobrepor
4 = Tomada de Embutir
5 = Acoplamento
7 = Plug

Linha:

S = Brasikon
N = Newkon
S = Shock Tite

S 4 2 7 6

2º Dígito - Amperagem:

0 = 16A
2 = 32A
5 = 63A
6 = 125A
8 = 200A
9 = 250A**

4º Dígito - Tensão/ Posição Horária/ Cor

2 = 24V – 2h - Lilás
4 = 100/130V – 4h - Amarelo
9 = 200/250V – 9h* - Azul
6 = 380/440V – 6h* - Vermelho
5 = 600/690V – 5h - Preto
0 = Até 500Hz – 10h - Verde

*Quando 2P+T, inverter posição horária:

Tensão 200/250V – 9h passa para 6h

Tensão 380/440V – 6h passa para 9h

**250A, somente linha Shock Tite - 600/690V – 1h – Preto

***Linha Shock Tite, acrescentar **W** no final do código

Linha: Plugues e Tomadas Blindadas Brasikon® Newkon® Shock Tite® Surelock®

Tabela para Baixa Tensão

16A - 32A - 63A - 125A - 200A

Tensão de Utilização	Frequência Hz	Posição Horária					
		2P + T 16 e 32A 63 e 125A		3P + T 16 e 32A 63 e 125A		3P + N + T 16 e 32A 63 e 125A	
100 a 130	50 e 60	4	4	4	4	4	4
200 a 250	50 e 60	6	6	9	9	9	9
380 a 440	50 e 60	9	9	6	6	6	6
250 / 440	60					11	11
440	60			11	11		
500	50 e 60	7	7	7	7	7	7
600 a 750	50 e 60	5	5	5	5	5	5
Mais de 50	100 a 300	10	10	10	10	10	10
Mais de 50	de 300 a 500	2	2	2	2	2	2
De 50 a 250	Corrente Contínua	3	3				
Mais de 250	Corrente Contínua	8	8				

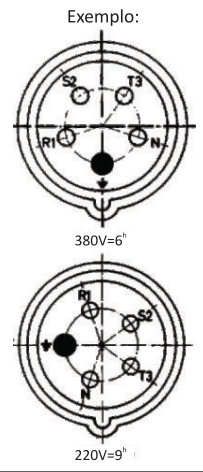
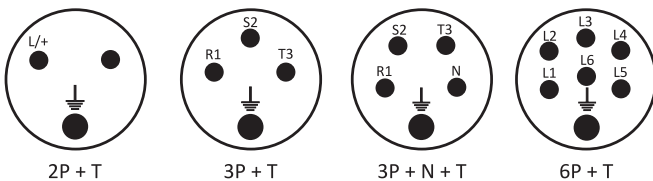


Tabela para Baixíssima Tensão 16A e 32A

Número de Pólos	Frequência Hz	Tensão V	Pino Terra em Horas	Cor
	50 e 60	20 a 25	-	Lilás
	50 e 60	40 a 50	12	Branco
2 e 3	de 100 a 200	até 50	4	Verde
	300	até 50	2	Verde
	400	até 50	3	Verde
	mais de 400 até 500	até 50	11	Verde
2	c.c.	até 50	10	Branco

Identificar Posição Terra pela Tomada (fêmea)

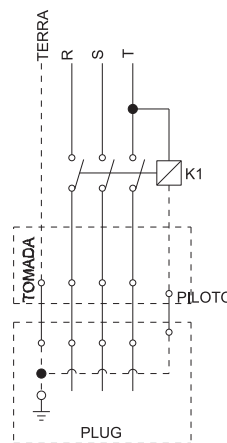


Tensão	Cor
20 e 25V	Violeta
40 a 50V	Branca
110 a 130V	Amarela
220 a 240V	Azul
380 a 440V	Vermelha
500 a 750V	Preta
Acima de 60 a 500 Hz	Verde

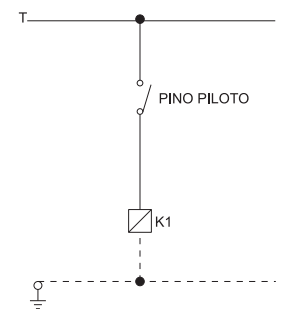
DISPOSITIVO ADICIONAL DE SEGURANÇA: Brasikon® Newkon® Shock Tite® Surelock®

As conexões 63, 125 e 200A podem ser fornecidas com contato piloto (opcional) na parte central. Este contato piloto fecha depois dos outros.

Ao retirar o plugue, este contato abre-se antes dos outros, evitando assim os perigos do arco elétrico. Para solicitar o contato piloto acrescentar a letra "P" após a referência do produto.



Exemplo de circuito de comando

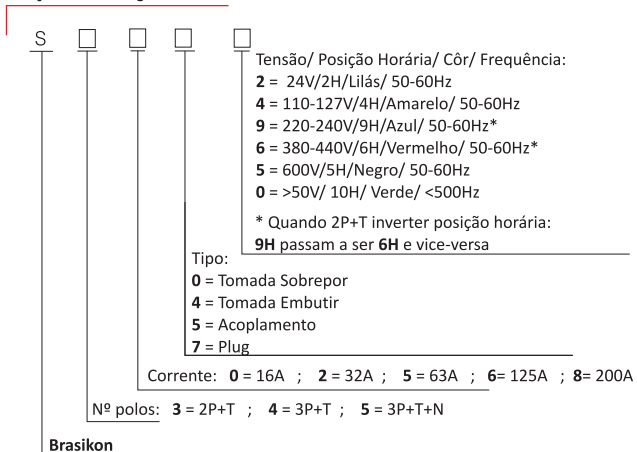


Obs:1- O pino piloto é o último a ser conectado e o 1º a ser desconectado.
2- A In do contator deve ser ≥ a da tomada.

Linha: Plugues e Tomadas Blindadas Brasikon®



Especificação:



Identificação dos Terminais:

Conforme U.L., CSA e NBR IEC 60309

Fases	Neutro	Terra
1 - 2 - 3		
R - S - T	N	⏏
X - Y - Z	W	
L		

Resistência ao Arco:

Conforme C.S.A. C22.2-182-1 (1990)
 Altamente isolante (até 750V - 500Hz)

Rigidez Dielétrica: NBR IEC 60309-1

Tens. Nom.	Tens. Ensaio
Até 50V	500V
Até 415V	2.000V
Até 500V	2.500V
Acima de 500V	3.000V

Resistência ao Impacto:

Conforme C.S.A. C22.2 nº 182-1 parágrafos 7.4.2 e 7.4.4

Resistência à Abrasão:

Conforme C.S.A. C22.2 nº 182-1 parágrafos 7.4.3 e 7.4.4

Estanqueidade:

Conforme norma NBR IEC 60529

Proteção Cabos:

Conforme C.S.A. C. nº 182-1 parágrafos 7.3

Tipo de Cabos:

Conforme U.L.62 e C.S.A.C22.2 nº 49

Resistências à Corrosão: (Partes Plásticas)

Salt Spray, Álcool, Óleo, Solventes, Lubrificantes, Graxas, Meios ácidos, Alcalinas e Outros Agentes Químicos.

Contatos Niquelados acrescentar NQ após o código.

Características Gerais

Matérias Primas:

Partes plásticas: Termo-plástico auto-extinguível
 (C.S.A. C22.2 nº6 e UL 94HB-Mil spec 22096).

Vedações e guarnições: SBR.

Terminais: Latão maciço.

Temperatura Operação:

0 / 120°C trabalho contínuo.

200°C (30 minutos).

Construção:

Conforme normas NBR IEC 60309-1, IEC 60309-2,
 DIN 49462, DIN 49463, CEE 17-BS4343 e VDE 0623.

Voltagem máxima de trabalho:

690 Volts RMS - Conforme NBR IEC 60309-1

Obs.: Dimensões e Desenhos no final da linha

Linha: Plugues e Tomadas Blindadas Brasikon®

Produto	Amp.	Pólos	24V	110 / 130V	220 / 240V	380 / 440V	600V	Até 500Hz												
Plugue  IP 44 ▲ Ligação nos contatos (mm ²) <table border="1"> <tr><td>Amp.</td><td>16A</td><td>32A</td></tr> <tr><td>Mín.</td><td>2,5</td><td>4,0</td></tr> <tr><td>Máx.</td><td>4,0</td><td>6,0</td></tr> </table>	Amp.	16A	32A	Mín.	2,5	4,0	Máx.	4,0	6,0	16	3	S3072	S3074	S3076	S3079	S3075	S3070			
	Amp.	16A	32A																	
	Mín.	2,5	4,0																	
	Máx.	4,0	6,0																	
	16	4	S4072	S4074	S4079	S4076	S4075	S4070												
	16	5	S5072	S5074	S5079	S5076	S5075	S5070												
	32	3	S3272	S3274	S3276	S3279	S3275	S3270												
	32	4	S4272	S4274	S4279	S4276	S4275	S4270												
	32	5	S5272	S5274	S5279	S5276	S5275	S5270												
	16	7				S0076														
32	7				S0276															
Plugue Negativo (fêmea) IP 44 ▲  Ligação nos contatos (mm ²) <table border="1"> <tr><td>Amp.</td><td>16A</td><td>32A</td></tr> <tr><td>Mín.</td><td>2,5</td><td>4,0</td></tr> <tr><td>Máx.</td><td>4,0</td><td>6,0</td></tr> </table>	Amp.	16A	32A	Mín.	2,5	4,0	Máx.	4,0	6,0	16	3	SN 3072	SN 3074	SN 3076	SN 3079	SN 3075	SN 3070			
	Amp.	16A	32A																	
	Mín.	2,5	4,0																	
	Máx.	4,0	6,0																	
	16	4	SN 4072	SN-4074	SN 4079	SN 4076	SN 4075	SN 4070												
	16	5	SN 5072	SN-5074	SN 5079	SN 5076	SN 5075	SN 5070												
	32	3	SN 3272	SN-3274	SN 3276	SN 3279	SN 3275	SN 3270												
32	4	SN 4272	SN-4274	SN 4279	SN 4276	SN 4275	SN 4270													
32	5	SN 5272	SN-5274	SN 5279	SN 5276	SN 5275	SN 5270													
Plugue  IP 67 ●● Ligação nos contatos (mm ²) <table border="1"> <tr><td>Amp.</td><td>63A</td><td>125A</td><td>200A</td></tr> <tr><td>Mín.</td><td>10,0</td><td>35,0</td><td></td></tr> <tr><td>Máx.</td><td>16,0</td><td>70,0</td><td>95,0</td></tr> </table>	Amp.	63A	125A	200A	Mín.	10,0	35,0		Máx.	16,0	70,0	95,0	63	3	S3572	S3574	S3576	S3579	S3575	S3570
	Amp.	63A	125A	200A																
	Mín.	10,0	35,0																	
	Máx.	16,0	70,0	95,0																
	63	4	S4572	S4574	S4579	S4576	S4575	S4570												
	63	5	S5572	S5574	S5579	S5576	S5575	S5570												
	125	3	S3672	S3674	S3676	S3679	S3675	S3670												
	125	4	S4672	S4674	S4679	S4676	S4675	S4670												
	125	5	S5672	S5674	S5679	S5676	S5675	S5670												
	200	3		S3874W	S3876W	S3879W	S3875W													
200	4		S4874W	S4879W	S4876W	S4875W														
Plugue Negativo (fêmea) IP 67 ●●  Ligação nos contatos (mm ²) <table border="1"> <tr><td>Amp.</td><td>63A</td><td>125A</td><td>200A</td></tr> <tr><td>Mín.</td><td>10,0</td><td>35,0</td><td>-</td></tr> <tr><td>Máx.</td><td>16,0</td><td>70,0</td><td>95,0</td></tr> </table>	Amp.	63A	125A	200A	Mín.	10,0	35,0	-	Máx.	16,0	70,0	95,0	63	3	SN 3572	SN 3574	SN 3576	SN 3579	SN 3575	SN 3570
	Amp.	63A	125A	200A																
	Mín.	10,0	35,0	-																
	Máx.	16,0	70,0	95,0																
	63	4	SN 4572	SN 4574	SN 4579	SN 4576	SN 4575	SN 4570												
	63	5	SN 5572	SN 5574	SN 5579	SN 5576	SN 5575	SN 5570												
	125	3	SN 3672	SN 3674	SN 3676	SN 3679	SN 3675	SN 3670												
	125	4	SN 4672	SN 4674	SN 4679	SN 4676	SN 4675	SN 4670												
	125	5	SN 5672	SN 5674	SN 5679	SN 5676	SN 5675	SN 5670												
	200	3		SN3874W	SN3876W	SN3879W	SN3875W													
200	5		SN4874W	SN4876W	SN4879W	SN4875W														
Plugue 90º  IP 44 ▲ Ligação nos contatos (mm ²) <table border="1"> <tr><td>Amp.</td><td>16A</td><td>32A</td></tr> <tr><td>Mín.</td><td>2,5</td><td>4,0</td></tr> <tr><td>Máx.</td><td>4,0</td><td>6,0</td></tr> </table>	Amp.	16A	32A	Mín.	2,5	4,0	Máx.	4,0	6,0	16	3		S11630	S11633	S11638					
	Amp.	16A	32A																	
	Mín.	2,5	4,0																	
	Máx.	4,0	6,0																	
	16	4		S11631	S11634	S11636	S116367	S116361												
	16	5		S11632	S11635	S11637	S116377													
	32	3		S13230	S13233	S13238														
32	4		S13231	S13234	S13236	S132367	S132361													
32	5		S13232	S13235	S13237	S132377														
Tomada de sobrepor  IP 44 ▲ Opção rosca GAS(*) Ligação nos contatos (mm ²) <table border="1"> <tr><td>Amp.</td><td>16A</td><td>32A</td></tr> <tr><td>Mín.</td><td>2,5</td><td>4,0</td></tr> <tr><td>Máx.</td><td>4,0</td><td>6,0</td></tr> </table>	Amp.	16A	32A	Mín.	2,5	4,0	Máx.	4,0	6,0	16	3	S3002	S3004	S3006	S3009	S3005	S3000			
	Amp.	16A	32A																	
	Mín.	2,5	4,0																	
	Máx.	4,0	6,0																	
	16	4	S4002	S4004	S4009	S4006	S4005	S4000												
	16	5	S5002	S5004	S5009	S5006	S5005	S5000												
	32	3	S3202	S3204	S3206	S3209	S3205	S3200												
	32	4	S4202	S4204	S4209	S4206	S4205	S4200												
	32	5	S5202	S5204	S5209	S5206	S5205	S5200												
	16	7				S1006														
32	7				S1276															

Obs.: Para Contatos Niquelados acrescentar NQ após o código
 (*) para rosca Gas verificar tabela de adaptadores página 67

Linha: Plugues e Tomadas Blindadas Brasikon®

Produto	Amp.	Pólos	24V	110 / 130V	220 / 240V	380 / 440V	600V	Até 500Hz								
Tomada de sobrepor negativa (macho)  IP 44 ⚠ Opção rosca GAS(*) Ligação nos contatos (mm ²)	16	3	SN 3002	SN 3004	SN 3006	SN 3009	SN 3005	SN 3000								
	16	4	SN 4002	SN 4004	SN 4009	SN 4006	SN 4005	SN 4000								
	16	5	SN 5002	SN 5004	SN 5009	SN 5006	SN 5005	SN 5000								
	32	3	SN 3202	SN 3204	SN 3206	SN 3209	SN 3205	SN 3200								
	32	4	SN 4202	SN 4204	SN 4209	SN 4206	SN 4205	SN 4200								
	32	5	SN 5202	SN 5204	SN 5209	SN-5206	SN 5205	SN 5200								
	<table border="1"> <tr> <td>Amp.</td> <td>16A</td> <td>32A</td> </tr> <tr> <td>Mín.</td> <td>2,5</td> <td>4,0</td> </tr> <tr> <td>Máx.</td> <td>4,0</td> <td>6,0</td> </tr> </table>		Amp.	16A	32A	Mín.	2,5	4,0	Máx.	4,0	6,0					
Amp.	16A	32A														
Mín.	2,5	4,0														
Máx.	4,0	6,0														
Tomada de sobrepor  IP 67 ⚡ Opção rosca GAS(*) Ligação nos contatos (mm ²)	63	3	S3502	S3504	S3506	S3509	S3505	S3500								
	63	4	S4502	S4504	S4509	S4506	S4505	S4500								
	63	5	S5502	S5504	S5509	S5506	S5505	S5500								
<table border="1"> <tr> <td>Amp.</td> <td>63A</td> </tr> <tr> <td>Mín.</td> <td>10,0</td> </tr> <tr> <td>Máx.</td> <td>16,0</td> </tr> </table>		Amp.	63A	Mín.	10,0	Máx.	16,0									
Amp.	63A															
Mín.	10,0															
Máx.	16,0															
Tomada de sobrepor negativa (macho)  IP 67 ⚡ Opção rosca GAS(*) Ligação nos contatos (mm ²)	63	3	SN 3502	SN 3504	SN 3506	SN 3509	SN 3505	SN 3500								
	63	4	SN 4502	SN 4504	SN 4509	SN 4506	SN 4505	SN 4500								
	63	5	SN 5502	SN 5504	SN 5509	SN 5506	SN 5505	SN 5500								
<table border="1"> <tr> <td>Amp.</td> <td>63A</td> </tr> <tr> <td>Mín.</td> <td>10,0</td> </tr> <tr> <td>Máx.</td> <td>16,0</td> </tr> </table>		Amp.	63A	Mín.	10,0	Máx.	16,0									
Amp.	63A															
Mín.	10,0															
Máx.	16,0															
Tomada de sobrepor  IP 67 ⚡ Opção rosca GAS(*)+ Ligação nos contatos (mm) ²	125	3	S3602	S3604	S3606	S3609	S3605	S3600								
	125	4	S4602	S4604	S4609	S4606	S4605	S4600								
	125	5	S5602	S5604	S5609	S5606	S5605	S5600								
	200	3		S3804	S3806	S3809	S3805									
	200	4		S4804	S4809	S4806	S4805									
<table border="1"> <tr> <td>Amp.</td> <td>125A</td> <td>200A</td> </tr> <tr> <td>Mín.</td> <td>35,0</td> <td>-</td> </tr> <tr> <td>Máx.</td> <td>70,0</td> <td>95,0</td> </tr> </table>		Amp.	125A	200A	Mín.	35,0	-	Máx.	70,0	95,0						
Amp.	125A	200A														
Mín.	35,0	-														
Máx.	70,0	95,0														
Tomada de sobrepor negativa (macho)  IP 67 ⚡ Opção rosca GAS(*) Ligação nos contatos (mm) ²	125	3	SN 3602	SN 3604	SN 3606	SN 3609	SN 3605	SN 3600								
	125	4	SN 4602	SN 4604	SN 4609	SN 4606	SN 4605	SN 4600								
	125	5	SN 5602	SN 5604	SN 5609	SN 5606	SN 5605	SN 5600								
	200	3		SN 3804	SN 3806	SN 3809	SN 3805									
	200	4		SN 4804	SN 4809	SN 4806	SN 4805									
<table border="1"> <tr> <td>Amp.</td> <td>125A</td> <td>200A</td> </tr> <tr> <td>Mín.</td> <td>35,0</td> <td>-</td> </tr> <tr> <td>Máx.</td> <td>70,0</td> <td>95,0</td> </tr> </table>		Amp.	125A	200A	Mín.	35,0	-	Máx.	70,0	95,0						
Amp.	125A	200A														
Mín.	35,0	-														
Máx.	70,0	95,0														
Tomada de embutir  IP 44 ⚠ Ligação nos contatos (mm) ²	16	3	S3042	S3044	S3046	S3049	S3045	S3040								
	16	4	S4042	S4044	S4049	S-4046	S4045	S4040								
	16	5	S5042	S5044	S5049	S-5046	S5045	S5040								
	32	3	S3242	S3244	S3246	S-3249	S3245	S3240								
	32	4	S4242	S4244	S4249	S-4246	S4245	S4240								
	32	5	S5242	S5244	S5249	S-5246	S5245	S5240								
	16	7					S1046									
	32	7					S1246									
<table border="1"> <tr> <td>Amp.</td> <td>16A</td> <td>32A</td> </tr> <tr> <td>Mín.</td> <td>2,5</td> <td>4,0</td> </tr> <tr> <td>Máx.</td> <td>4,0</td> <td>6,0</td> </tr> </table>		Amp.	16A	32A	Mín.	2,5	4,0	Máx.	4,0	6,0						
Amp.	16A	32A														
Mín.	2,5	4,0														
Máx.	4,0	6,0														

Obs.: Para Contatos Niquelados acrescentar NQ após o código
 (*) para rosca Gas verificar adaptadores página 67

Linha: Plugues e Tomadas Blindadas Brasikon®

Produto		Amp.	Pólos	24V	110 / 130V	220 / 240V	380 / 440V	600V	Até 500Hz	
Tomada de embutir negativa (macho) 	IP 44 ▲	16	3	SN 3042	SN 3044	SN 3046	SN 3049	SN 3045	SN 3040	
	Ligação nos contatos (mm ²)	16	4	SN 4042	SN 4044	SN 4049	SN 4046	SN 4045	SN 4040	
		16	5	SN 5042	SN 5044	SN 5049	SN-5046	SN-5045	SN 5040	
		32	3	SN 3242	SN 3244	SN 3246	SN 3249	SN 3245	SN 3240	
		32	4	SN 4242	SN 4244	SN 4249	SN 4246	SN 4245	SN 4240	
		32	5	SN 5242	SN 5244	SN 5249	SN 5246	SN 5245	SN 5240	
	Amp.	16A	32A							
	Mín.	2,5	4,0							
	Máx.	4,0	6,0							
	Tomada de embutir 	IP 67 ▲▲	63	3	S3542	S3544	S3546	S3549	S3545	S3540
Ligação nos contatos (mm ²)		63	4	S4542	S4544	S4549	S4546	S4545	S4540	
		63	5	S5542	S5544	S5549	S5546	S5545	S5540	
		125	3	S3642	S3644	S3646	S3649	S3645	S3640	
		125	4	S4642	S4644	S4649	S4646	S4645	S4640	
		125	5	S5642	S5644	S5649	S5646	S5645	S5640	
		200	3		S3844	S3846	S3849	S3845		
		200	4		S4844	S4849	S4846	S4845		
Amp.		63A	125A							
Mín.		10,0	35,0							
Máx.	16,0	70,0								
Tomada de embutir negativa (macho) 	IP 67 ▲▲	63	3	SN 3542	SN 3544	SN 3546	SN 3549	SN 3545	SN 3540	
	Ligação nos contatos (mm ²)	63	4	SN 4542	SN 4544	SN 4549	SN 4546	SN 4545	SN 4540	
		63	5	SN 5542	SN 5544	SN 5549	SN 5546	SN 5545	SN 5540	
		125	3	SN 3642	SN 3644	SN 3646	SN 3649	SN 3645	SN 3640	
		125	4	SN 4642	SN 4644	SN 4649	SN 4646	SN 4645	SN 4640	
		125	5	SN 5642	SN 5644	SN 5649	SN 5646	SN 5645	SN 5640	
		200	3		SN 3844	SN 3846	SN 3849	SN 3845		
		200	4		SN 4844	SN 4849	SN 4846	SN 4845		
	Amp.	63A	125A	200A						
	Mín.	10,0	35,0	-						
Máx.	16,0	70,0	95,0							
Acoplamento (extensão) 	IP 44 ▲	16	3	S3052	S3054	S3056	S3059	S3055	S3050	
	Ligação nos contatos (mm ²)	16	4	S4052	S4054	S4059	S4056	S4055	S4050	
		16	5	S5052	S5054	S5059	S5056	S5055	S5050	
		32	3	S3252	S3254	S3256	S3259	S3255	S3250	
		32	4	S4252	S4254	S4259	S4256	S4255	S4250	
		32	5	S5252	S5254	S5259	S5256	S5255	S5250	
		16	7				S1056			
		32	7				S1256			
	Amp.	16A	32A							
	Mín.	2,5	4,0							
Máx.	4,0	6,0								
Acoplamento (extensão) 	IP 67 ▲▲	63	3	S3552	S3554	S3556	S3559	S3555	S3550	
	Ligação nos contatos (mm ²)	63	4	S4552	S4554	S4559	S4556	S4555	S4550	
		63	5	S5552	S5554	S5559	S5556	S5555	S5550	
		125	3	S3652	S3654	S3656	S3659	S3655	S3650	
		125	4	S4652	S4654	S4659	S4656	S4655	S4650	
		125	5	S5652	S5654	S5659	S5656	S5655	S5650	
		200	3		S3854W	S3856W	S3859W	S3855W		
		200	4		S4854W	S4859W	S4856W	S4855W		
	Amp.	63A	125A	125A						
	Mín.	10,0	35,0	-						
Máx.	16,0	70,0	95,0							

Obs.: Para Contatos Niquelados acrescentar NQ após o código.

Linha: Plugues e Tomadas Blindadas Brasikon®






Produto	Amp.	Pólos	24V	110 / 130V	220 / 240V	380 / 440V	600V	Até 500Hz										
Extensão Brasikon Tipo: 2BC 	Extensão cabeadada com Plugue (5m de Cabo), mais 2 Tomadas Ligação nos contatos (mm²) <table border="1"> <tr> <th>Amp.</th> <th>16A</th> <th>32A</th> </tr> <tr> <td>Mín.</td> <td>2,5</td> <td>4,0</td> </tr> <tr> <td>Máx.</td> <td>4,0</td> <td>6,0</td> </tr> </table>	Amp.	16A	32A	Mín.	2,5	4,0	Máx.	4,0	6,0	16	3	S1722	S1724	S1726	S1729	S1725	S1720
		Amp.	16A	32A														
		Mín.	2,5	4,0														
		Máx.	4,0	6,0														
		16	4	S1822	S1824	S1829	S1826	S1825	S1820									
		16	5	S1922	S1924	S1929	S1926	S1925	S1920									
32	3	S2722	S2724	S2726	S2729	S2725	S2720											
32	4	S2822	S2824	S2829	S2826	S2825	S2820											
Módulo Tomada Brasikon Características: 	01 Tomada Brasikon Ligação nos contatos (mm²) <table border="1"> <tr> <th>Amp.</th> <th>16A</th> <th>32A</th> </tr> <tr> <td>Mín.</td> <td>2,5</td> <td>4,0</td> </tr> <tr> <td>Máx.</td> <td>4,0</td> <td>6,0</td> </tr> </table> Dimensões externas: 114 x 114 x 91,5mm Opção rosca GAS (Ver tabela abaixo)	Amp.	16A	32A	Mín.	2,5	4,0	Máx.	4,0	6,0	16	3	SOB CONSULTA	SP 3004	SP 3006	SP 3009	SP 3005	SOB CONSULTA
		Amp.	16A	32A														
		Mín.	2,5	4,0														
		Máx.	4,0	6,0														
		16	4	SP 4004	SP 4009	SP 4006	SP 4005											
		16	5	SP 5004	SP 5009	SP 5006	SP 5005											
32	3	SP 3204	SP 3206	SP 3209	SP 3205													
32	4	SP 4204	SP 4209	SP 4206	SP 4205													
32	5	SP 5204	SP 5209	SP 5206	SP 5205													
Tampa de Proteção para Plugues 	À prova d'água	63	3/4/5	S66350														
		125	3/4/5	S67350														
Plugue e Acoplamento para Baixíssima Tensão - IP44 Características: Tensão 42Vca 3 Pólos (12h) 16A Cor Branca	Plugue  S083	Acoplamento  S283																

Tabela de Adaptadores de Rosca PG/GAS

Esta tabela serve para os seguintes produtos:

Tomadas Blindadas Brasikon®

Tomadas Blindadas Shock-Tite®

Tomadas Bloqueio Mecânico Surelock®

Tomadas Blindadas Newkon®



De Rosca	Para: Rosca	
PG 11,0	BSP 3/8	S0160
PG 13,5	NPT 1/2	S0046
PG 16,0	NPT 1/2	S0047
	NPT 3/4	S0048
PG 21,0	NPT 3/4	S0049
	BSP 3/4	S0149
	BSP 1	S042
PG 29,0	BSP 1 1/2	S0029
	NPT 1 1/2	S0030
	NPT 1	S0051
BSP 1/2	PG 16	S0156
	NPT 1/2	S0052

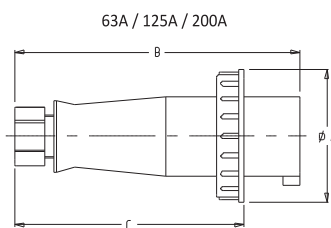
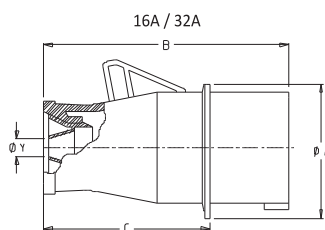
De Rosca	Para: Rosca	
BSP 3/4	PG 21	S0058
	BSP 3/4	S0152
	NPT 3/4	S0053
BSP 3/8	PG 11	S070112
BSP 1	NPT 1	S0054
	PG 29	S0145
	BSP 3/4	S0144
BSP 1 1/4	NPT 1 1/4	S0055

Linha: Plugges e Tomadas Blindadas Brasikon

Dimensões e Desenhos Técnicos

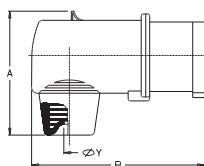
Plugue e Plugue Negativo (fêmea) - 16A até 200A

Corrente	16A				32A				63A			125A			200A		
	3	4	5	7	3	4	5	7	3	4	5	3	4	5	3	4	5
A	43,2	49,8	57,0	57,0	57,0	57,0	62,5	62,5	110,5	110,5	110,5	124,5	124,5	124,5	124,5	124,5	124,5
B	112,0	112,0	136,0	136,0	136,0	136,0	161,3	161,3	250,5	250,5	250,5	320,6	320,6	320,6	326,0	326,0	326,0
C	75,0	75,0	99,3	99,3	91,6	91,6	116,2	116,2	204,0	204,0	204,0	263,1	263,1	263,1	263,1	263,1	263,1
ROSCA BSP	-	-	-	-	-	-	-	-	1 1/2"	1 1/2"	1 1/2"	2 1/4"	2 1/4"	2 1/4"	2 1/4"	2 1/4"	2 1/4"
Ø Cabo	Mín.	8,0	8,0	13,0	13,0	15,0	15,0	13,0	13,0	32,0	32,0	32,0	37,0	37,0	37,0	37,0	37,0
	Máx.	13,0	13,0	15,0	15,0	22,0	22,0	15,0	15,0	38,0	38,0	38,0	44,0	44,0	44,0	44,0	44,0



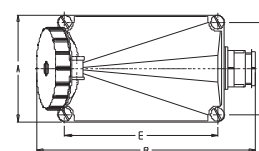
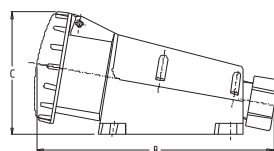
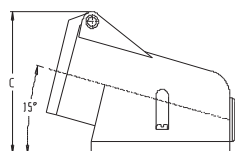
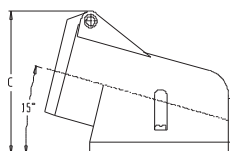
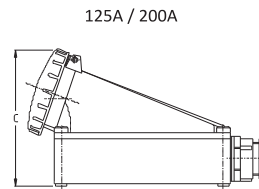
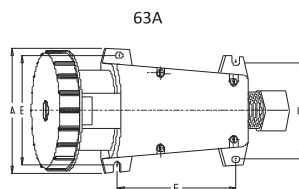
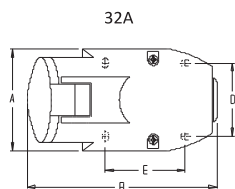
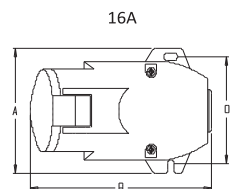
Plugue 90°

Corrente	16A			32A		
	3	4	5	3	4	5
A	70,0	77,0	88,0	90,0	90,0	100,0
B	109,0	113,0	117,0	135,0	135,0	135,0
Ø Cabo	Mín.	8,0	8,0	13,0	15,0	13,0
	Máx.	13,0	13,0	15,0	22,0	15,0



Tomada de Sobrepor e Tomada de Sobrepor Negativa (macho) 16A até 200A

Corrente	16A				32A				63A			125A			200A		
	3	4	5	7	3	4	5	7	3	4	5	3	4	5	3	4	5
A	81,1	81,1	79,5	79,5	79,5	79,5	90,4	82,0	121,0	121,0	121,0	160,0	160,0	160,0	160,0	160,0	160,0
B	117,1	117,1	146,8	146,8	146,8	146,8	154,8	152,0	252,0	252,0	252,0	344,0	344,0	344,0	344,0	344,0	344,0
C	88,6	88,6	105,0	105,0	105,0	105,0	113,5	105,0	125,0	125,0	125,0	192,0	192,0	192,0	192,0	192,0	192,0
D	70,0	70,0	48,4	48,4	48,4	48,4	50,0	60,0	85,0	85,0	85,0	139,0	139,0	139,0	139,0	139,0	139,0
E	-	-	-	-	64,0	64,0	68,0	47,5	105,0	105,0	105,0	240,0	240,0	240,0	240,0	240,0	240,0
F	-	-	-	-	-	-	-	-	122,0	122,0	122,0	-	-	-	-	-	-
Rosca PG	16	16	21	21	21,0	21,0	21,0	21,0	29	29	29	-	-	-	-	-	-
Rosca BSP	-	-	-	-	-	-	-	-	-	-	-	1 1/2"	1 1/2"	1 1/2"	1 1/2"	1 1/2"	1 1/2"
Ø Cabo	Mín.	10,0	10,0	13,0	13,0	13,0	13,0	13,0	18,0	18,0	18,0	32,0	32,0	32,0	32,0	32,0	32,0
	Máx.	14,0	14,0	18,0	18,0	18,0	18,0	18,0	25,0	25,0	25,0	38,0	38,0	38,0	38,0	38,0	38,0



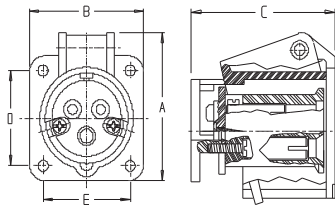
Linha: Plugues e Tomadas Blindadas Brasikon

Dimensões e Desenhos Técnicos

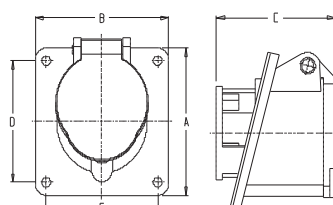
Tomada de Embutir e Tomada de Embutir Negativa (macho) 16A até 200A

Corrente	16A				32A				63A			125A			200A	
Pólos	3	4	5	7	3	4	5	7	3	4	5	3	4	5	3	4
A	72,9	85,0	87,5	80,0	85,0	85,0	86,0	80,0	111,0	111,0	111,0	111,4	111,4	111,4	111,4	111,4
B	62,0	84,0	84,0	80,0	84,0	84,0	85,0	80,0	111,0	111,0	111,0	112,5	112,5	112,5	112,5	112,5
C	67,5	68,3	83,0	84,5	68,3	68,3	82,8	95,5	123,5	123,5	123,5	148,6	148,6	148,6	148,6	148,6
D	46,5	70,0	70,0	60,0	69,0	69,0	70,0	60,0	89,0	89,0	89,0	88,0	88,0	88,0	88,0	88,0
E	46,5	70,0	70,0	60,0	69,0	69,0	70,0	60,0	89,0	89,0	89,0	88,0	88,0	88,0	88,0	88,0
F	24,8	-	-	-	-	-	35,5	-	-	-	-	45,4	45,4	45,4	45,4	45,4
ØG	52,0	60,0	67,0	58,0	67,0	67,0	75,0	64,0	92,0	92,0	92,0	95,0	95,0	95,0	95,0	95,0
ØH	4,5	4,5	5,5	5,5	4,5	4,5	4,5	5,5	4,5	4,0	4,5	4,5	4,5	4,5	4,5	4,5
RI	3,2	-	-	-	-	-	7,0	-	-	-	-	8,1	8,1	8,1	8,1	8,1

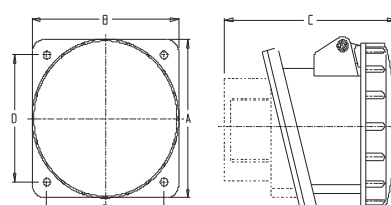
16A - 3P



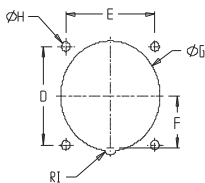
16A - 4P - 5P - 7P / 32A



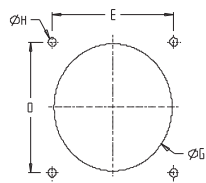
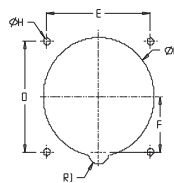
63A / 125A / 200A



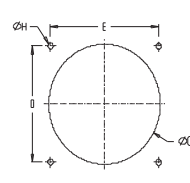
Detalhes de Furação de Painel



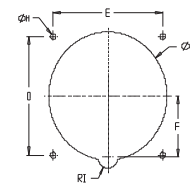
Furação para 16A - 3P

Furação para 16A - 4P - 5P - 7P
32A - 3P - 4P

Furação para 32A - 5P



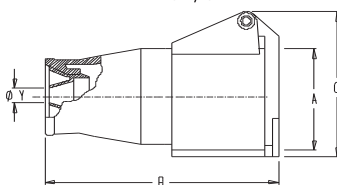
Furação para 63A - 3P - 4P - 5P

Furação para 125A / 200A
3P - 4P - 5P

Acoplamento e Acoplamento Negativo (macho) - 16A até 200A

Corrente	16A				32A				63A			125A			200A		
Pólos	3	4	5	7	3	4	5	7	3	4	5	3	4	5	3	4	5
A	50,4	58,2	65,4	64,3	65,4	72,0	72,0	72,0	111,0	111,0	111,0	123,5	123,5	123,5	122,6	122,6	122,6
B	117,7	115,4	143,0	166,0	148,0	148,0	169,0	169,0	263,5	263,5	263,5	329,0	329,0	329,0	342,6	342,6	342,6
C	71,0	78,0	97,5	83,5	87,5	87,5	94,6	94,6	112,5	112,5	112,5	127,0	127,0	127,0	124,8	124,8	124,8
Rosca BSP	-	-	-	-	-	-	-	-	1 1/2"	1 1/2"	1 1/2"	2 1/4"	2 1/4"	2 1/4"	2 1/4"	2 1/4"	2 1/4"
Ø Cabo	Mín.	8,0	8,0	13,0	13,0	15,0	15,0	13,0	32,0	32,0	32,0	37,0	37,0	37,0	37,0	37,0	37,0
	Máx.	13,0	13,0	15,0	15,0	22,0	22,0	15,0	38,0	38,0	38,0	44,0	44,0	44,0	44,0	44,0	44,0

16A / 32A



63A / 125A / 200A

